

GREETINGS
1905





Old Home Week

1905

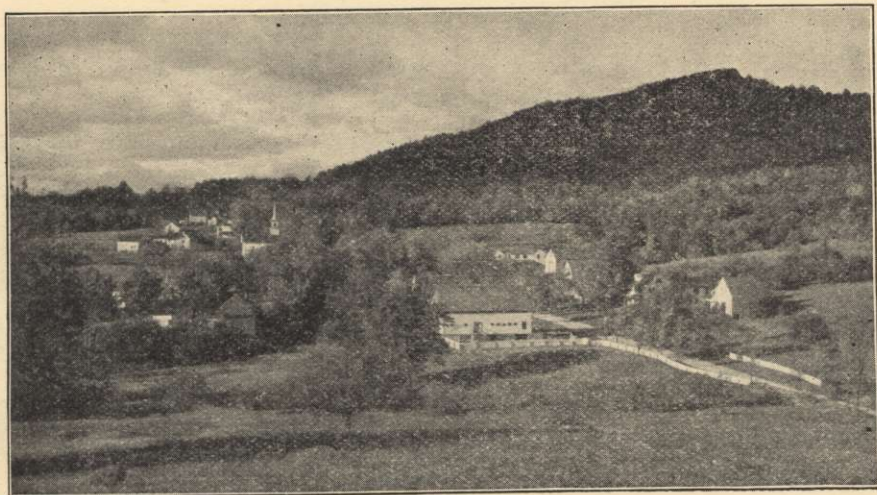
Madison, N. H.

*L*etter of Invitation.

"Sons and daughters of Madison,
We invite you back to show
Homage to a common birthplace
And the days of long ago.
You were born where rugged mountains
In stupenduous grandeur stand,
Taught the lessons of your childhood
From the book of Nature grand.
So we hope you'll wander backward,
Through the scenes of youth elate,
To repeat the matchless glories
Of the grand old Granite State."

JAMES O. GERRY,
Secretary.



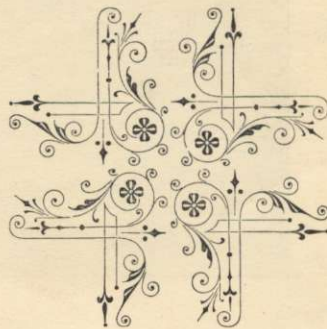


Madison Village.

Its Location and Attractions-

MADISON is on the Eastern Division of the Boston & Maine railroad, 125 miles north of Boston. As we leave West Ossipee on the journey north, the wooded hills of the Ossipee Range roll back on the left showing a fine view of the Sandwich Range on the northwest. The great Tamworth Valley opens on the left, girded by tall mountains and rugged ridges.

As the train passes on, various views are given of the Sandwich Range on the left, the nearest mountain being the superb white peak of Chocorua; next the low and ledgy Paugus; then the dark and pointed Passaconaway; the high blanchd cliffs of Whiteface; the lofty flat top of Sandwich Dome; the crest of Mt. Israel isolated on the plain. The pyramidal Whittier Peak is seen at the end of the Ossipee Range, and the Alpine Heights to the north gradually fall behind each other as the train advances. On the right, the Green Mountains of Effingham are frequently seen, and a glimpse of Kearsarge and Moat is obtained far in advance.

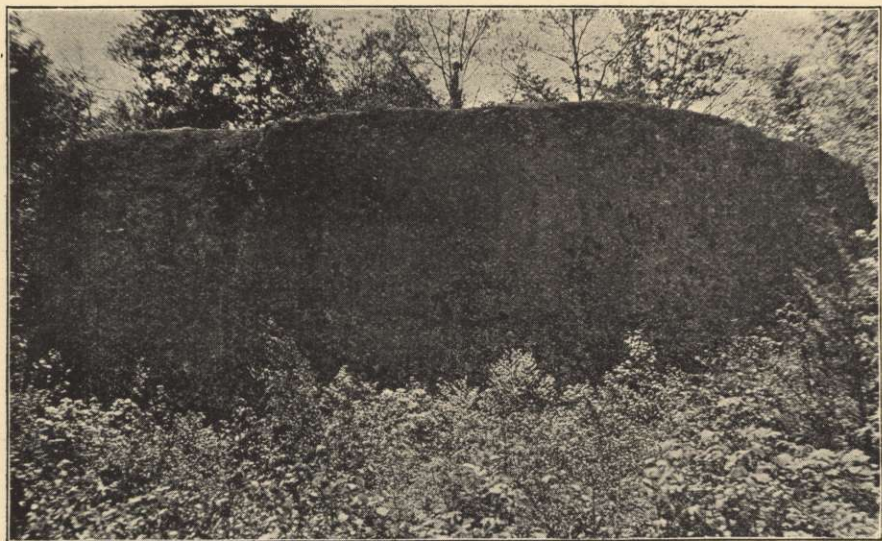


SILVER LAKE is seen close at hand, and its white, sandy beaches are followed for a long distance, with Glynes and Lyman Mountains beyond, and Silver Lake Village at its head. Silver Lake is one of those graceful bodies of water that suggests a Highland Loch, a Swiss Lake, the Gulf of Venice, or any of those dreamy places of rest. From the village it opens up a long vista of most entrancing appearance, while from the lake and southern shore, delightful mountain prospects gleam on you over a sheet of liquid silver.



MADISON BOULDER—The largest of the glacial travellers on this continent is perhaps the one situated in the north-west part of Madison, not far from the White Ledge quarries. Its length is seventy-five feet; height from the surface of the ground thirty-eight feet; it has six sides respectively, thirty-two, twenty-two, seventy-five, thirty-one, fourteen, and forty and two-thirds, making a total circumference of two hundred and fourteen and two-thirds feet. It is granite of a porphyrite texture, and closely resembles the rock forming Mt. Willard. The lower ends are scow-shaped, and the mass rests upon a bed of pieces of rock of the same material.

THE SILVER-LEAD MINE—First worked in 1826, will well repay a visit. The rock is a quartzite near an immense sandy plain, where rock expos-



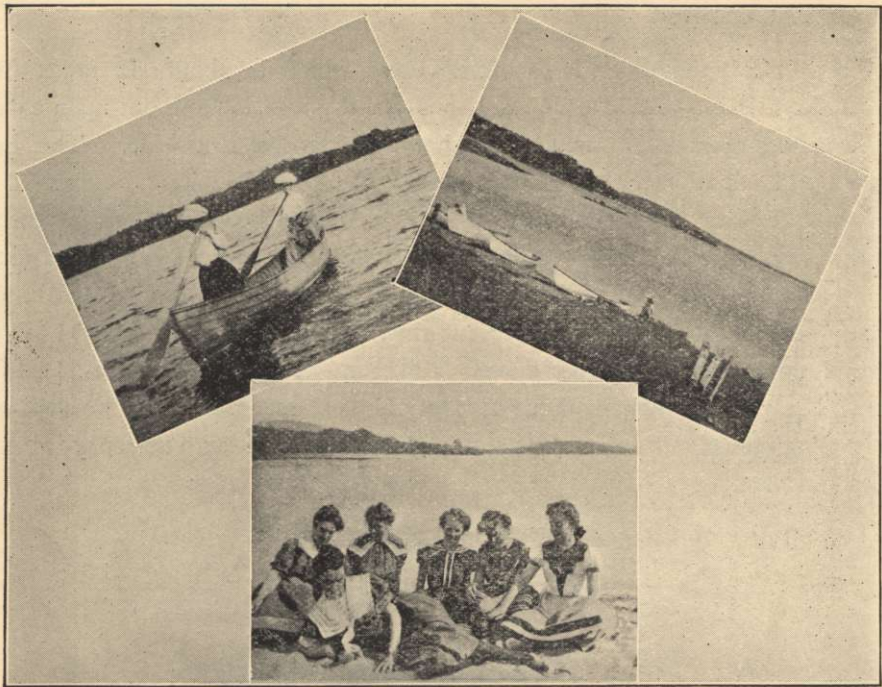
The Famous Madison Boulder.

ures are almost unknown. The galena gave ninety-four ounces to the ton, with a large per cent, of silver.

ANOTHER attraction is Bickford's Cave, which is about six miles from Silver Lake. It is a gothic arch, gray, mossy and grand, looking out upon a dark, deep, woody gorge, and is thirty feet high and twenty-five feet wide. The back has such an inclination that seats for eighty persons could easily be arranged as in an ampitheatre. From the top, a ridge of earth has been cast up in former days that leads to Pea Porridge Pond, and a legend connects it with the Indians who once roved these wilds. Pearson Heights and Loud's Hill are charmingly picturesque and attractive, and present unrivalled long distance views of the White Mountain region. From Gove's Hill can be seen seventeen sheets of water. The view from the summit of Deer Hill is unsurpassed for beauty, even among mountain prospects, and its sunrise and sunset views well repay the tourist and traveller.

"I love these low hills in the green of summer,
I love them in autumn's rich vesture of brown,
And oft in the spring do I worship and wonder,
As beyond their gray crests the great sun purples dow^Tn."





Silver Lake—Two Favorite Sports—Canoeing—Bathing.



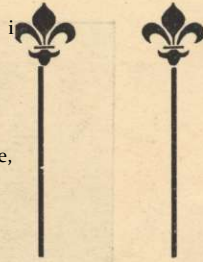
Residence of Frank E. Lyman, Silver Lake.

MEADOW BROOK FARM, SILVER LAKE



Residence of Frank E. Lyman.

If there's anything needed in your everyday life,
Just call on Frank Lyman or his genial wife;
If it's eggs, milk or vegetables, and you're wanting the best,
Just call at the farm and give their's a test.
Then if you need any barbering, shoemaking or laundry work done,
Or most any other job known under the sun,
Just give them a call, they can meet the demand
And send you off happy if anyone can.



AUGUSTUS FICKETT, MADISON, N. H.



**Blacksmith and
Horseshoer.**

Carriage and Sleigh Ironing.

Carts and Sleds Built and Repaired.

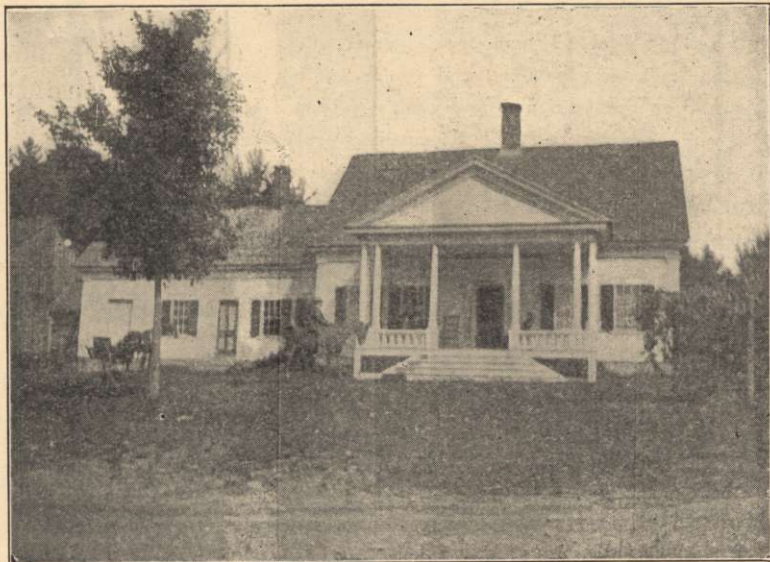
Located at a Central Point Between
Villages of Madison and Silver Lake.

P. O. Address, Silver Lake, N. H.

PURITY SPRING FARMS AND COTTAGES

MADISON, Carroll County, NEW HAMPSHIRE.

On this farm is the wonderful spring PURITY, with its unexcelled scientific endorsement.



All those who enjoy out-of-door life and wishing to BOARD, or RENT A COTTAGE in an ideal spot, surrounded with forests, lakes, brooks and mountains, where they can gain health and have true country recreation, should apply for terms and booklet to *EDWARD E. HOYT, P. O., East Madison.*

WALTER KENNETT,

ALL KINDS OF

Fresh Meats



and
Provisions.

SILVER LAKE, N. H.

DAVID KNOWLES

PROPRIETOR
OF THE Silver Lake

Greenhouses

Also Dealer in

VEGETABLES and
DECORATIVE PLANTS
and SHRUBS.

SILVER LAKE, N. H.

Wilbur G. Martin,
Physician and Surgeon,
Madison, N. H.



Architect and
Builder.

Colonial Cottages a Specialty.
Silver Lake, N. H.

BOARDING AND LIVERY STABLE.

HEAVY TEAM JOBBING A SPECIALTY.



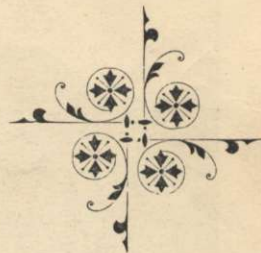
Wayside Farm.

*N. K. FORREST, SILVER LAKE,
N. H.*

Historical Notes of Madison.

MADISON AND EATON originally were chartered as one town in 1764, and was named Eaton in memory of Gen. John Eaton for meritorious military services. The name of Eaton continued until 1852 without division, in which year, by an act of the legislature, Madison was then constituted a town by itself.

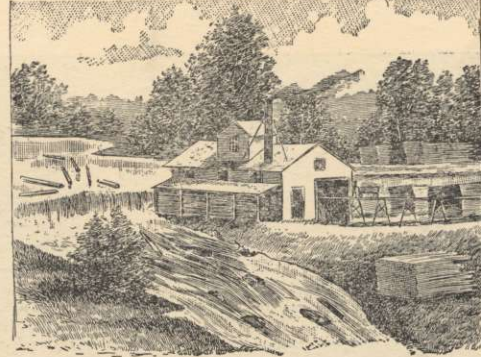
There was no permanent settlement in the town until about 1780, when Samuel Banfill, the great grandfather of the writer, built him a log house near the old burying ground on land now owned by Lester R. Ambrose. Mr. Banfill also built the first framed house in town. About 1780, Mr. Robertson came and settled at what is now called Eaton Center. Oresiphorus Flanders, great grandfather of the writer, came from New Hampton about 1787, and settled on land now owned by James F. Durgin. There were at that time ten families in town. My grandmother was a daughter of Mr. Flanders, and she has told me many times the names of each one. Samuel Banfill, Dr. James Jackson, Thomas Burke, Timothy Danforth, Thomas Danforth and Mr. Robertson were among the number.





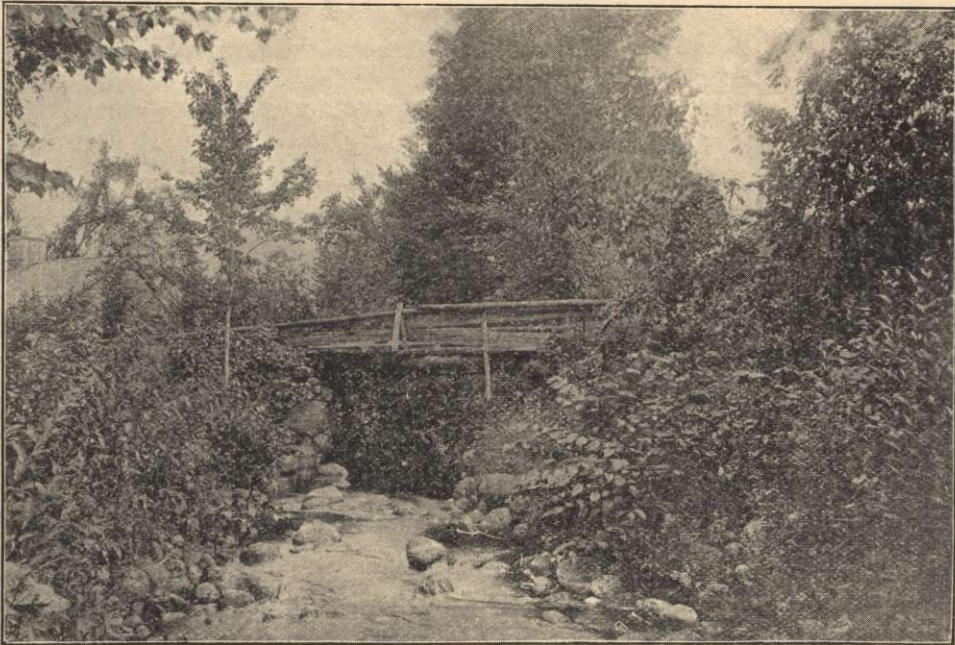
Old Homestead of Robert Drew,
Pioneer Settler of the Town

After about 1790 came quite a number of families and Eaton was a place to emigrate to up to 1835. The new settlers cleared land, built houses and mills, and had fine stocks of cattle. Clearing the land and burning the growth made it rich in potash and the crops were abundant.



About 1850 came up the question of dividing the town and was the cause of much contention. At last in the year 1852, at the fall session of the legislature, an act was passed to constitute the town of Madison. Artemas Harmon, Esq., then a member of the legislature from the town of Eaton, had much influence in forwarding the measure. The writer was at the village when the news were received that the town was divided, and it was duly celebrated by the firing of guns and other demonstrations of joy.

The early settlers of the town had many hardships to encounter. In the year 1816, there were no crops raised by reason of the cold, wet weather, and they had as much as they could do to keep soul and body together. The next year, 1817, the crops were plentiful. As one old man said, "they passed from a sharp famine to unbounded plenty."



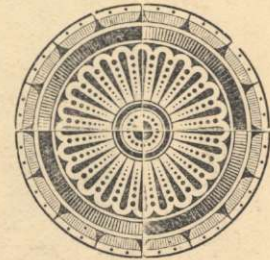
The Old Bridge.

Most of the early settlers were descendants of the Orangemen, that settled in the central part of the state near Manchester, and they had wonderful energy to endure the hardships of a pioneer life.

Madison abounds in beautiful scenery. The Big Boulder, Jackson's Ledge, Stacy Mountain, the Rock House and Lead Mines are all worth a visit. From the top of Stacy Mountain can be counted seventeen ponds and lakes. The drive from Madison to Conway abounds in beautiful views.

There are several springs in town that have medical qualities. One at the foot of Stacy Mountain is quite a curiosity from the large volume of water that flows from it; one also at East Madison, near the residence of Edward E. Hoyt; one near Ruel Allard's; one near Blue Pond; and one near the residence of the late James J. Burke.

The air of the White Mountain region is very bracing. A gentleman told the writer that he had visited all parts of the world, except Australia, and he had never found so pure air as in the region of the White Mountains.



AUGUSTUS LARY, Historian.



Madison Railroad Station—Winter of 1902-3.



JOHN M. WARD,

MADISON, N. H.



HOUSE PAINTING.



Odd Fellows' Hall, Silver Lake.

HOUSE PAINTING

OFFICERS
AND
COMMITTEES



President, John H. Burke
1st Vice President, Ernest E. Kennett
2nd Vice President, John A. Forrest
Secretary, James O. Gerry
Treasurer, I. A. Forrest

EXECUTIVE—

John H. Burke
E. E. Kennett
John A. Forrest

LOCATION—

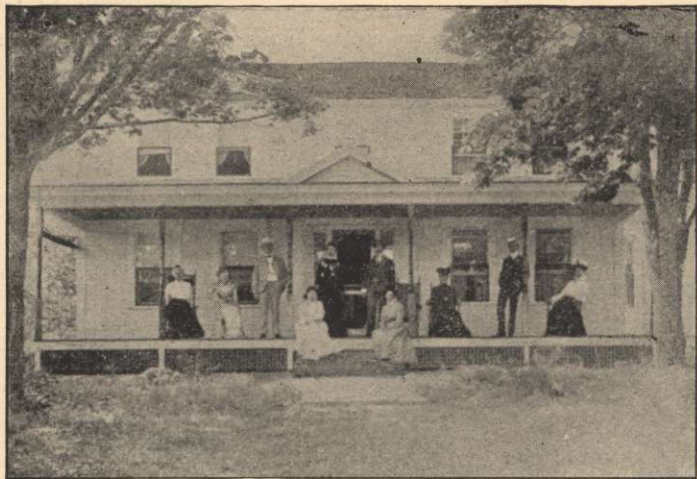
John F. Chick
John M. Ward
John L. Frost

FINANCE—

Hattie L. Chick
Millie P. Burke
Mary B. Kennett

BASE BALL—

James O. Gerry
Henry E. Plummer
Frank P. Schmitt, Jr



"BURKELY INN"—In the White Mountains,
Residence of John H. Burke.

BALL—

Bert P. Gerry
Frank B. Nason
Irving C. Kennett

MUSIC—

Voted—That the Madison Association of Massachusetts furnish music for sacred concert and musical.

ADVERTISEMENT AND
ENTERTAINMENT—

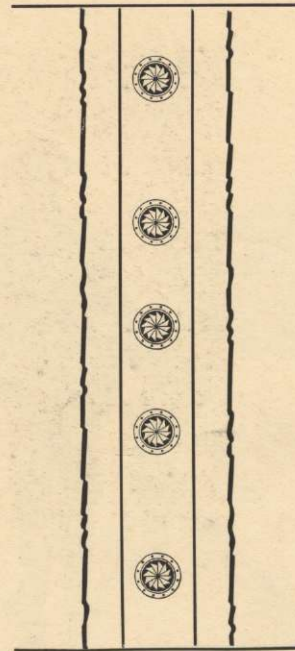
John T. Clow
I. A. Forrest
John H. Burke

ATHLETIC SPORTS—

David B. Leppere
John A. Forrest
Charles S. Schmitt

BON FIRE—

Chase Phillips
Frank A. Gray
Asbra Harmon
Byron Fickett
Albion Twombly







A 10 1-2 pound trout taken
from the waters of Silver
Lake, Spring of 1903, by
L. N. Knox.



DINNER—

Mrs. F. E. Lyman
Mrs. H. C. Harriman
Mrs. J. E. Burke
Mrs. I. A. Forrest
Mrs. Fred Allard
Mrs. J. L. Frost
Mrs. George N. Kennett
Mrs. S. J. Gilman
Mrs. David Knowles

REPORTER—

Miss Emma Schmitt





Harmony Hall, Madison.
Residence of Nellie A. Harmon.

OLD HOME WEEK PROGRAM



SATURDAY, August 19—Receiving visitors. Ball game, 2.30 p. m., home grounds. Bon fire at 8 p. m. on ball grounds.

SUNDAY, August 20—Old Home Sermon, 11 a. m., by Rev. Thos. H. Scammon. Sacred concert, 7.30 p. m., at the church.

MONDAY, August 21—Ball game, 2.30 p. m., home grounds. Old Maids' convention, 7.30 p. m., at the town hall.

TUESDAY, August 22—Street parade at 1 p. m., sharp; \$10 and \$5 prizes for best decorated teams. Parade starts at town hall. Ball game, 2.30 p. m., Madison vs. Freedom, home grounds.

WEDNESDAY, August 23—Ball game, Freedom vs. Madison at Freedom.

THURSDAY, August 24—Old Home day. Picnic dinner. Band concert. Speaking and athletic sports at the grove. Whist party at town hall, 8 p. m.

FRIDAY, August 25—Recreation. Grand ball, I. O. O. F. hall, Silver Lake.



Silver Lake House, Silver Lake.

SILVER LAKE HOUSE, SILVER LAKE, N. H.

MISS EMMA M. FORREST, Proprietress.

First Opened to the Public in 1876.

It is situated on the northern shore, commanding a delightful view of the lake of the same name. It is widely and favorably known as a charming summer resort, and is filled each returning season with lovers of pure air and beautiful mountain scenery. While New Hampshire is called the Switzerland of America, Silver Lake with its curving, sandy beaches commands a view that suggests a highland loch.

How blithely might the bugle horn
Chide, out on the Lake the lingering morn!
How sweet at eve the lover's lute
Chime, when the groves were still and mute!—*Scott's Lady of the Lake*



FORREST, CHICK & SON, SILVER LAKE, N. H.

An Up-to-date Line of



Common Furniture, Fancy Chairs and Rockers.
Straw Mattings. "Princess" Dressers. Side-
boards. Couches, Etc. Stoves and Ranges.
Agate and Aluminum Ware.

Stylish, Well Finished and Guaranteed Goods.

The "ORIENT" White Felt Mattress, guaranteed equal to the "Ostermore,"
at less expense.

PROMPT DELIVERY.  FAIR DEALING.



Chick's Lumber Mill.

**WHEN IN
NEED**

Of Shingles, Laths, Clapboards, North Carolina Pine, Sheathing, Flooring, Turned Piazza Posts, Doors, Windows, Mouldings, Brick, Lime, Cement,

OR ANYTHING IN THE LINE OF

BUILDING MATERIAL



Come, Write or Telephone to

 **CHICK'S LUMBER MILL,** Silver Lake, N. H.

CHOCORUA PEAK HOUSE, Chocorua Mountain,
N. H.

Postoffice address, Silver Lake, N. H.

DAVID KNOWLES, PROPRIETOR.



"Chocorua silent stands

Forever gazing out across the lands

Where once the Indian chieftain roved who gave it name, and

Its stern wildness loved."

Terms: \$2.50 per day; \$12.00 per week;
supper, lodging and breakfast, \$2.00.



Lakeside House, Silver Lake.

LAKESIDE HOUSE,



*Beautifully Located on the Shore of Silver Lake.
Plenty of Shade Trees and Fine Lawns.
Accommodations for Twenty-five.
Reasonable Rates.
Good Livery.*



WALTER KENNETT, Proprietor, Silver Lake, N. H.

Everything generally found in a First-Class Country Store

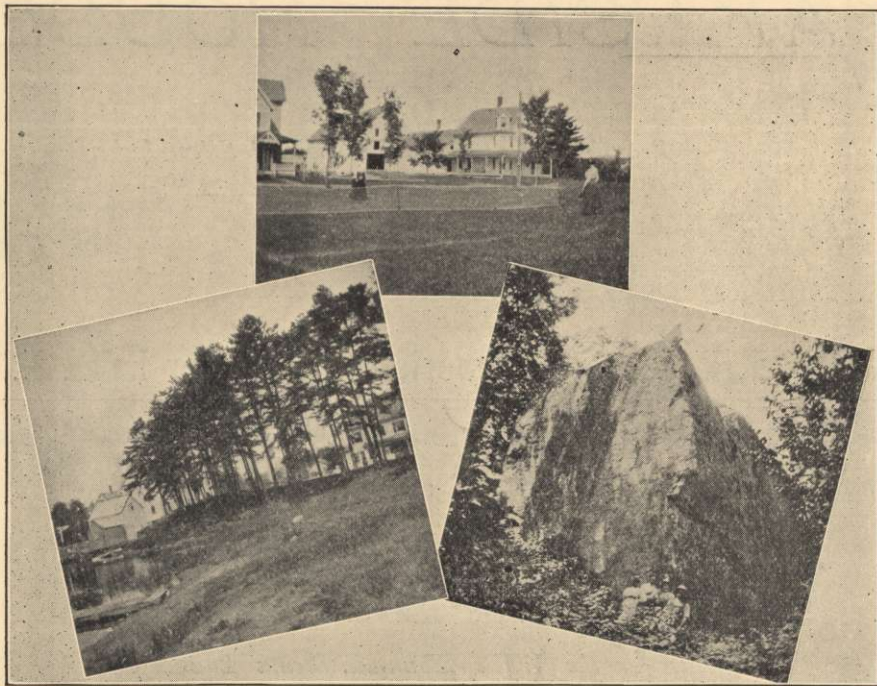
MAY BE HAD OF

Gilman Bros., Silver Lake, N. H.



Agents for the White Mountain Steam Laundry.

Dry and Fancy Goods, Ladies' and Gents' Furnishing Goods,
Crockery and Glassware, Fruits and Vegetables,
Fancy Groceries, Hay and Grain.



Lawn Tennis Grounds.

A Picnic Grove.

Madison Boulder.

Madison Soldiers in

Atkinson, Webster

Blaisdell, Pembroke

" Hosea Q.

" Robinson

" Virgil S.

Drew, Enoch

" Daniel

Ferren, Jesse

" Moses

" George W.

Frost, George S.

" John

Flanders, Josiah E.

" Roscoe M.

Green, Ansil B.

Gray, George W.

" Nathaniel W.



War of Rebellion.

Glidden, Sewell E.

" John Wesley

Hutchins, Thomas O.

Hutchings, John

Harriman, Eugene

" Benjamin

Harmon, George F.

" Orrin W.

" Isaac M.

" Samuel

" John Colby

" Charles

" Lieut. Addison G.

" John M.

Jackson, Stephen

Kennison, Roswell M.

Littlefield, Diamond



Residence of John C. Soutter, Deer Hill, Madison.

Lord, Eben
Marston, Thomas F.
Morrow, Lewis C.
Moulton, Newell
Nickerson, Luke
Stacy, Nathan
" Samuel H. K.
" Stephen
Tibbetts, Stephen R.
Wakefield, Benjamin
Ward, Samuel

SPANISH WAR.

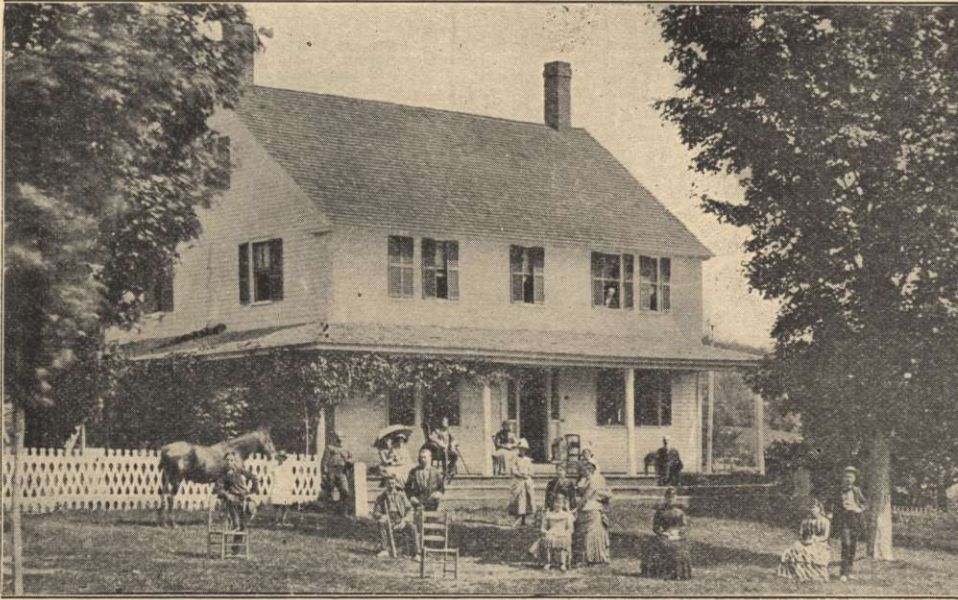
Drew, Robert

Signed,

Harriet Forrest Wart en.



"My native town, I love to tell thy charm;
Right royal are thy gifts from Nature's hand,
Here she bestows for all earth's woes a balm,
O fairest spot in all the favored land.
Thy beauteous lakes, bright gems, set deep in green,
Amid dark forests beam upon our sight;
The morning glories tint their silver sheen,
The evening gilds all with its amber light.
O half score woody ponds that we call ours;
Ye bring sweet peace to many a troubled heart;
Your coves all lily-lined, your fern fringed bowers,
Lure one to rest from all the world apart."



Churchill House, Madison.

CHURCHILL HOUSE

SARAH E. CHURCHILL, PROPRIETRESS.

A Most Charming Summer Resort and Magnificent Scenery.



This house is situated at MADISON, New Hampshire, on the Eastern Division of the Boston & Maine Railroad.



If you want to be away from the restraints of fashionable life, and where the utmost attention is paid to your wants, THIS IS THE PLACE.

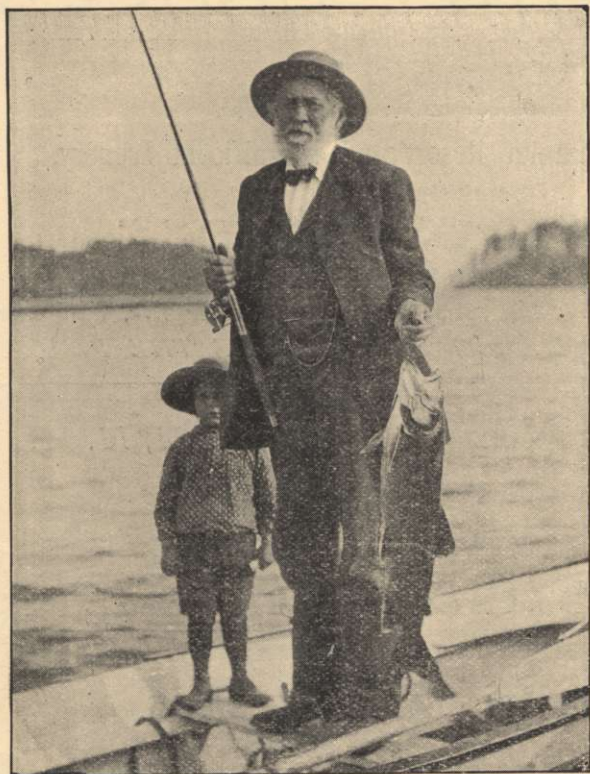
W. C. KENNETT, MADISON, N. H.

WHOLESALE DEALER IN

DIMENSION LUMBER

WOOD, BARK AND PILING.







A Guest with one of the
beauties taken from the
waters of Silver Lake.



MAPLE GROVE HOUSE,

Beautifully Located
with fine views of
the mountains. o

Pure Running Spring Water in the House.
Broad Piazzas. Large Shade Trees on the Lawns.



Fresh Vegetables, Eggs, Butter and Milk from the Farm.

¶Accommodations for Twenty-five. ¶Rates Reasonable.

R. K. CHICK, PROPRIETOR. MADISON, N. H.



"The Majors," Ridge Road.

"Should auld acquaintance be forgot"

"THE MAJORS," MADISON, N. H.

"THE MAJORS" is delightfully situated on an elevation overlooking fifty miles of mountain scenery, making the view unsurpassed by any in New England.

ALTITUDE ABOUT 700 FEET.

Pure Spring Water, Milk, Berries and Vegetables
FRESH FROM THE FARM.

For terms and particulars, address *MRS. H. C. COLBY, PROPRIETRESS*

J. W. TYLER, DEALER IN

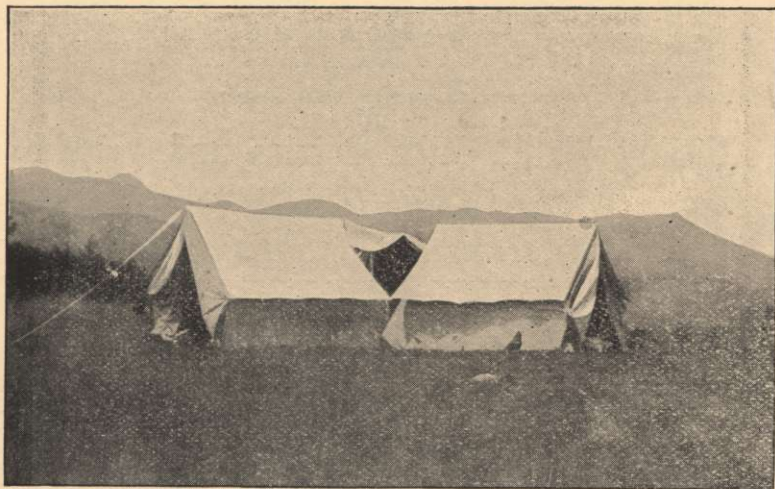
Groceries, Flour, Grain, Dry Goods
and General Merchandise.



ALSO ♠ BOOTS, ♠ SHOES ♠ AND ♠ RUBBERS.

SILVER LAKE, NEW HAMPSHIRE.

Agent for Devoe's Paints and Materials.



Camp Scene at Clayton's Hill.

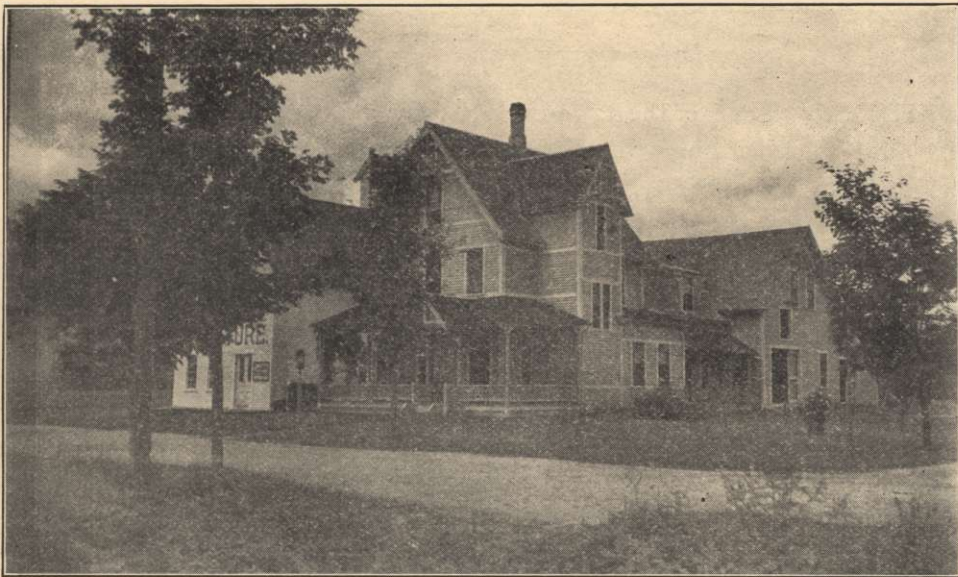
Reminiscenses of Early Days.

THE early settlers of the town were hardy and enterprising pioneers, and bore their hardships without a murmur, and had in their hearts and lives the spirit and love of liberty, patriotism and education, as is attested by their record in the War of 1812, and later by their descendants in the Civil War. In the War of 1812, were George Martin, Nathaniel, Stephen, John and Moses Harri-man, Joseph and William Lyman, Josiah Thomas, Nathaniel and Robert Drew, Isaiah Forrest and James Mooney. Robert Drew was the last pensioner of the war.



James Merrow was a gunner in Perry's engagement on Lake Erie. John Marsh was captain of a company which marched to the defense of Portsmouth. Ephraim Nason, Joseph Snow and Stephen Snow were also in the service.

Isaiah Forrest was a recruiting officer in the War of 1812, and enlisted men in Eaton and marched with them to Burlington via Concord. From Burlington he carried 20,000 for the government to Portland. Following is a copy of his appointment as ensign:



Residence of I. A. Forrest, Silver Lake.

WAR DEPARTMENT,

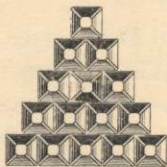
June 16, 1814.

SIR: YOU are hereby informed that on the 25th instant, the jurisdiction of the U. S. appointed you an ensign in the 26th Reg't. of Infantry in the service of the U. S. whereunto the senate at the next session, with its advice and consent thereunto, you will be commissioned accordingly. You will immediately on receipt of this, please communicate to this department your acceptance or non-acceptance of said appointment and report yourself to Colonel J. Clark.

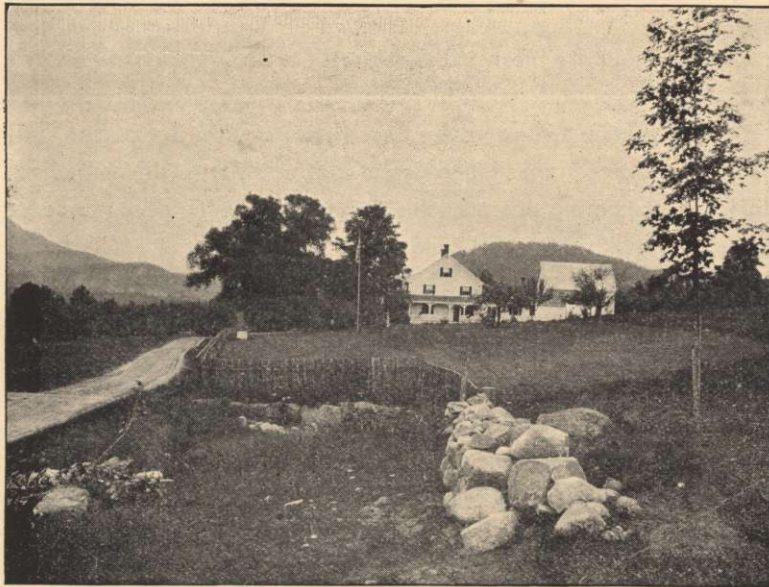
J. ARMSTRONG,

Sec. of War.

Gen. Hercules Mooney of the Revolution, was of Lee. He served through the war with credit. He had a grandson, James, born in 1798. Here his active, resolute disposition, brought him into military life, and he was in the War of 1812, and later became captain of a company of militia, which afterward entered the U. S. service and bore a conspicuous part in the Indian Stream War.



"And sometimes, when the moonlight silvers hill and vale and stream,
It shines on the old church windows with a faint delusive beam,
Till imagination pictures the church with light agleam.
In fancy seems a beauteous throng of worshippers in white,
Whose faces bring back long ago, yet glow with strange, new light,
While from their lips angelic songs make music in the night."



On the "Ridge" and about a mile north of Madison Corner is the old Davis place, which has undergone a complete transformation. It is now called "Willow Farm," and is one of the most attractive places in Carroll County. It is owned and occupied by Mr. and Mrs. Frank P. Schmitt of Chicago, Ill., as their summer home.

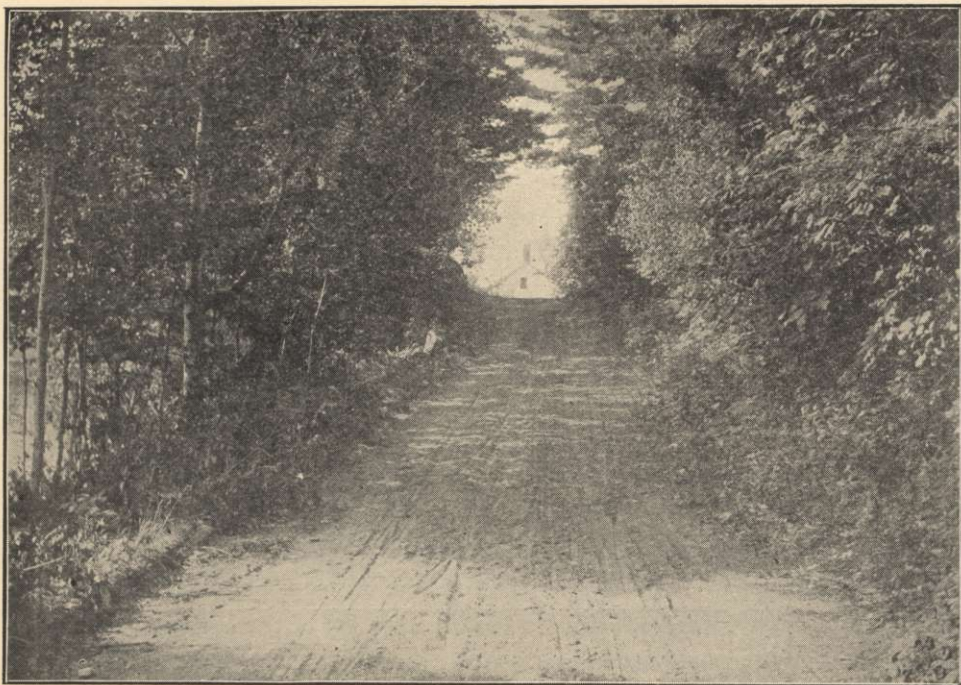
PURITY SPRING is situated in a picturesque location on one of the collection of farms owned by E. E. Hoyt of Madison, and has come into prominence from the almost absolute purity of its waters, as analysis on several occasions by some of our most noted chemists has shown, while the many visitors to this region have heralded its fame far and wide. The sale at the present time is extensive through the branch offices located in New York, Brooklyn and Boston.

"The water is soft, clear, white, tasteless and free from organic matter. It is very seldom that water of such remarkable purity and excellence is found."

H. L. Bowker, State Assayer.

It is the solvent, cleansing and purifying power of water which makes its chief value to the human system. This water, "Purity," has more of the solvent or purifying quality than any water heretofore analyzed. It is true, therefore, that pure water is pure food—85 per cent, of the human body is water—consequently pure water is indispensable to the preservation of the highest health conditions of the body, and a continuous use of the water from this spring would greatly eliminate the susceptibility to the many diseases to which man is liable.

The lands of Madison abound in springs from which pure waters flow, but



The Road Leading to the Spring.

none has the equal or same standard of analysis as the "Purity," it being alone in a class by itself. The waters from this spring are served daily to the occupants of Purity Spring farms and cottages, and many a weary traveler quenches his thirst by its side. The road leading to the spring is one of those picturesque by-paths for which New Hampshire is famous, shaded by the graceful overhanging boughs of the adjacent trees as the accompanying picture shows.



I. A. FORREST, SILVER LAKE, N. H.

Agent B. & M. R. R. and American Express Co.

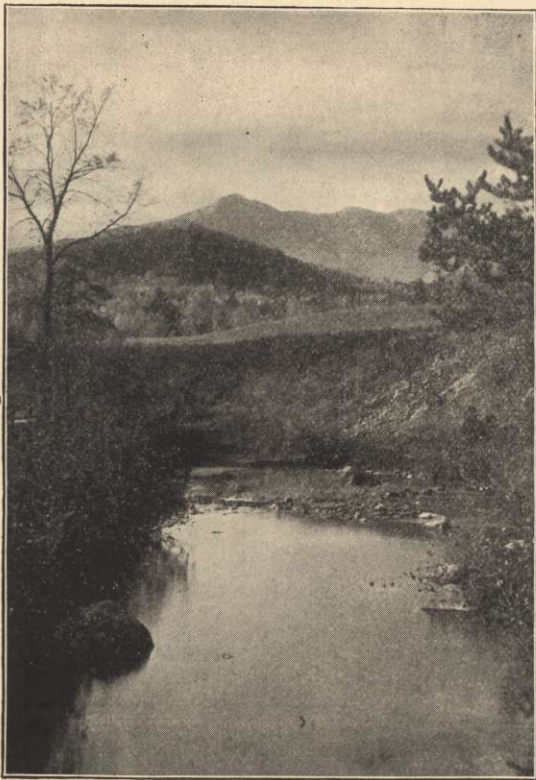
Also Newspaper Agency

†BOSTON GLOBE †BOSTON HERALD
†BOSTON JOURNAL
†Orders taken for Mail Delivery.

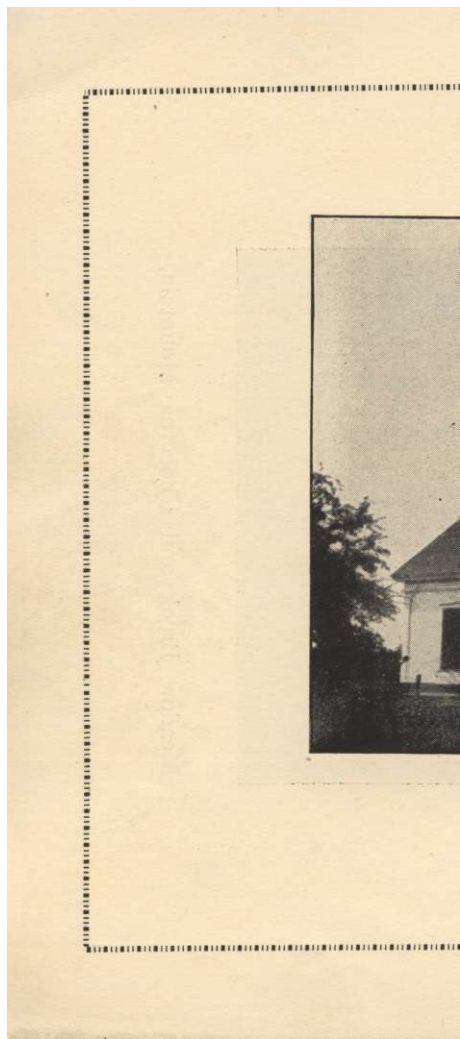
Row Boats—For sale also to let by the hour day or week at reasonable prices.



The Old Mill.



Meadow Brook and Chocorua Mountain.





Madison Church.

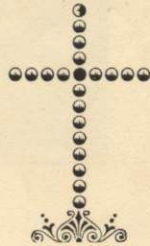
Historical Brief of Madison Church.

The Renaissance of Christian Liberty, or the Revival of the Freedom of the Will—

In 1780, about the time of the first permanent settlement in the town of Eaton, and the year of the birth of the first white babe in the settlement, there was founded a new denomination of christians known as Freewill Baptists. The founder of the denomination was Rev. Benjamin Randall of New Durham, N. H. This revival of liberty soon permeated the whole state, and as a consequence the First Free Will Baptist Church of Eaton came into existence.

Origin and Organization—

More than a century of history clusters about the church at Madison Corner. In the year 1800, Elder Green commenced the revival that changed the current of thought and interest in Eaton, so that in 1803, there were a sufficient number of persons interested to organize a Free Will Baptist Church. On the 14th day of May, 1803, the First Free Will Baptist Church of Eaton was organized. The church was organized by the consent of a council of men who were leaders in the comparatively new denomination, Rev. Benjamin Randall, the founder, be-





Residence of G. H. and H. E. Plummer.

ing chairman of the council. For fifty years the old church served the community in the name and capacity of the First Free Will Baptist Church of Eaton.

Re-Organization—

In 1854, two years after Madison had been set off from Eaton and constituted a separate town by an act of the legislature of 1852, the church was reorganized and known as the First Freewill Baptist Church of Madison, Rev. John Ronnel being chairman of the council. On Aug. 5th, 1854, the first meeting of the re-organized church was held in the White school house, Elder J. Wood being chosen moderator and pastor. Through changing vicissitudes has the old church stood for social, moral and spiritual improvement. Often unseen the leaven has been working in the meal of the community, sometimes rising above the limited methods of formality when moved by a warm glow, but ever doing its work in the community.



The Pastors of the Church—

The following is a list of the pastors and the dates of their administrations. Dr. James Jackson was acting pastor from 1803 to 1818, ably assisted in 1806 by Rev. Richard Marden, and in 1811 by Rev. John Colby. Thus:

Dr. James Jackson, 1803-18

No records, 1821-24.

Rev. Jonathan Woodman, 1819-20

Rev. Elder Perkins, 1824.



Residence of Josiah H. Hobbs, Esquire,
As seen in Autumn.

Rev. Benjamin Manson, 1826-27	Rev. J. B. Leighton, 1873-75
Rev. Elder Fisk, 1830-31	Rev. Uriah Chase, 1876-80
Rev. Elder Petingal, 1832-33	Rev. W. S. Packard, 1881-82
Rev. Elder Eaton, 1833	Rev. W. H. Trafton, 1882-85
Rev. James Emery, 1836-37	Rev. H. Hammond, 1885
Rev. Samuel Knowles, 1837-38	Rev. Charles E. Blake, second pas- torate, 1886-90
Rev. Thomas Sanborn, 1838-43	Rev. Edwin Blake, 1890-92
Rev. Charles E. Blake, first pasto- rate, 1844-45	Rev. Taylor Nelson, 1893
Rev. Silas Gaskill, 1846.	Rev. L. Given, 1894-95
Rev. Ansil J. Wood, 1852-54	Rev. Lot L. Harmon, 1895-98
Rev. Elder Fletcher, 1858-59	Rev. C. E. Cook, 1898-1902
Rev. Samuel Frost, 1862-63	Rev. D. M. Phillips, 1902-04
Rev. Charles Hurlin, 1868-71	Rev. J. T. Clow, 1905
Rev. A. C. Peaslee, 1871-73	

Membership—

The church membership has fluctuated greatly during the century, rising beyond the 200 mark at times, and at other seasons down to a very few. More than a thousand souls have been united with the church since its first organization. Six gospel ministers have gone out from the Madison Church since its organization, three of whom are still active, Rev. E. Y. Eastman, Rev. Frank



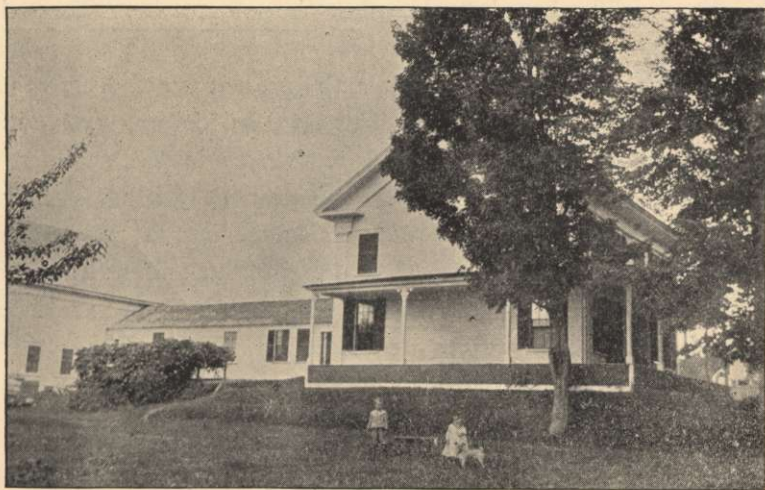
Residence of Sidney D. Gilman, Silver Lake.

Pearson, Rev. J. T. Scammon. There passed away to his reward Rev. Lot L. Harmon, June, 1905, to spend the summer in the upper home land.

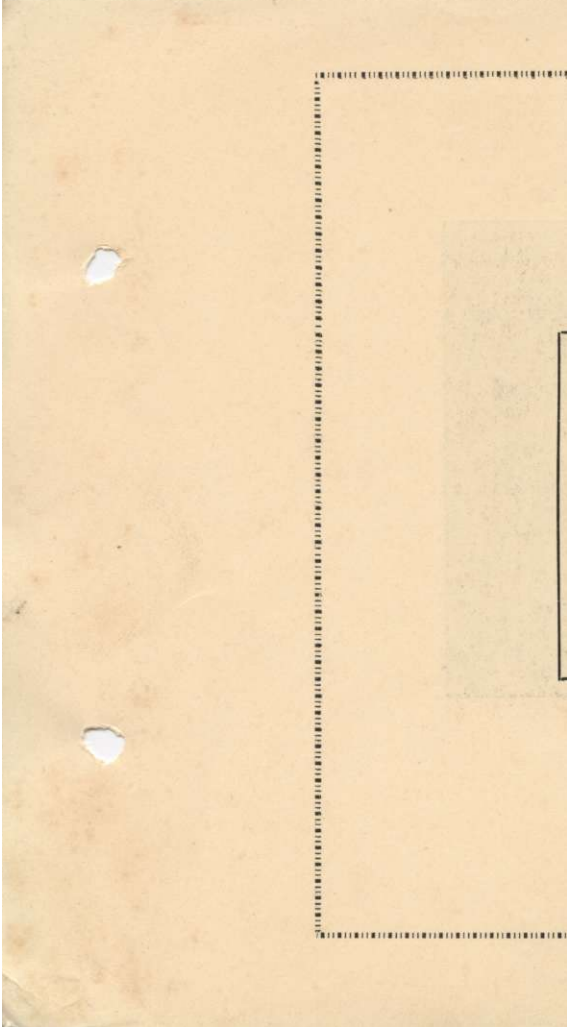
Church Edifice—

The church edifice has always stood on the present site. Situated on the main road from Madison to Conway, only a few steps from the town hall, it has become a landmark. It is a general centre, the present worshippers coming from two to four miles in various directions. The first edifice was erected in 1825. The present edifice was built in 1855, and remodelled in the summer of 1888, when a fine bell was placed in the tower. This year, 1905, it has again been renovated. Steel has been placed upon the walls and ceiling, a new entrance and vestibule added, making the house much more pleasant, all at the expense of \$700.00. Other improvements are needed. New pews ought to replace the old ones. Sheds for horses and vehicles are absolutely necessary, and the sum of \$1000.00 is needed to complete the work begun.





Residence of Ernest E. Kennett.



The Old Man of the PIONEER extends most cordial greetings to every visitor to, and every resident of Madison during Old Home Week, and hopes that the festivity may be one continuous round of pleasure and enjoyment. An account of the proceedings will no doubt be found in the PIONEER at an early date. Order a copy.



Cascades near Madison Corner.

PLACES OF INTEREST IN AND AROUND MADISON.

Silver Lake,	1	1-2	Miles			Eaton Center,	4		Miles
Silver Lake Lead Mine,	4		"			Chocorua Lake,	6		"
Madison Boulder,	3		"			North Conway,	11		"
Bickford Rock House,	3	1-2	"			Ordination Rock,	8		"
Merrow Farm,	2		"			Echo Lake,	10		"
Deer Hill,	2	1-2	"			Wanalancet Falls,	12		"
Pearson Heights,	2		"			Sleeper Farm,	14		"
Lyman Ledge,	2		"			Summit of Chocorua:			
Hedgehog Mountain,	2	1-2	"			By Piper Trail,	10		"
Governor Hill,	4		"			By Hammond Trail,	10		"
Willow Farm,	2		"			By Knowles' Road,	13		"
Jackson's Ledge,	1	1-2	"			Knowles' Pond,	8		"
Purity Spring Mills,	4		"			Tamworth,	7		"
Diana's Baths,	12		"			Whitney's Observatory,	10		"
Stephenson Hill,	8		"			Fowler's Mills,	13		"
Jackson,	20		"			Swift River Falls,	20		"
Passaconaway Postoffice,	18		"			White Pond,	7		"
Ossipee Lake,	6		"			Lowd's Heights,	4		"
Conway,	6		"			o o o o o o o o			



WAYSIDE FARM 

D. W. FOSTER.


**HARNESS Cleaning and
Repairing.**

Silver Lake, N. H.

Ambrose & McGraw,

Practical Horseshoers
and 
General Blacksmith
Work. 

Madison, N. H.

TEAMS TO LET 
AT THE OLD STAND.

Prices reasonable.

Reduced rates given to Picnic Parties.



Long Distance Telephone Nearby.

When in town give me a call.

JOHN L. FROST, Madison, N. H.

SAMUEL WARD,

Stone  Work

OF ALL KINDS.

SILVER LAKE, N. H.



